



Fairway Heights | Camberley | Surrey | GU15 1NJ

Offers Over £200,000 Leasehold

*Waterford's* W  
Residential Sales & Lettings



Fairway Heights | Camberley  
Surrey | GU15 1NJ  
Offers Over £200,000

Situated in a sought after location backing towards Camberley Heath Golf Course, this well proportioned one bedroom flat has larger than average living space with the benefit of a dining area and dressing room or home office.

- One bedroom
- Dining area
- Study/dressing room
- Ensuite bathroom
- Modern kitchen
- Communal parking

## Accommodation

A entry phone system leads to the communal entrance hall and stairs lead to the first door. The front door opens to the Living room with the addition of a Dining area and is open=plan to the Kitchen, with a range of cabinets and a variety of fitted appliances. The Bedroom has a rear aspect window and benefits from a walk-in dressing room or home office, as well as an ensuite bathroom.

Lease: 88 years remaining Service Charge: £1,620 pa Ground Rent: £75 pa





No onward chain



## Outside

The apartments benefit from generous communal parking and pleasant communal grounds that back onto Camberley Heath Golf Course.

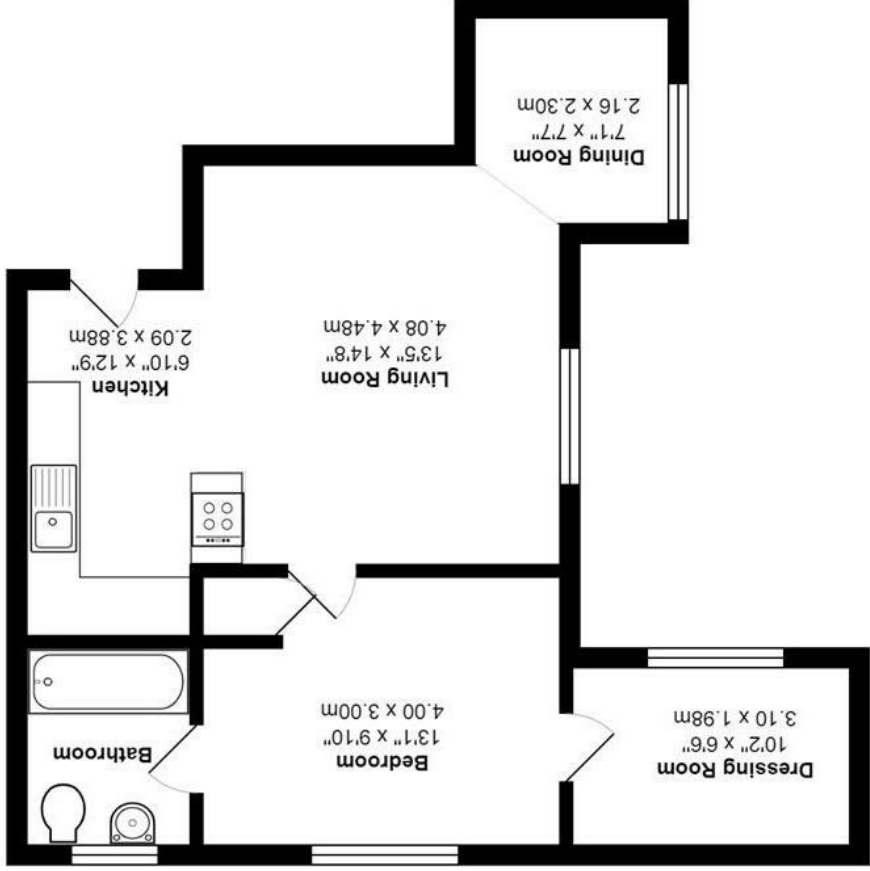
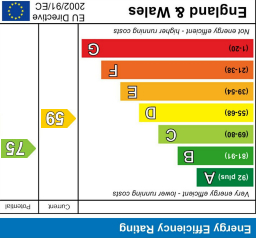
## Location

Set in a highly sought-after cul-de-sac, Fairway Heights is one of Camberley's most desirable residential addresses. This peaceful neighbourhood is ideally positioned backing onto Camberley Heath Golf Course. The property is well-served by excellent local schools, both state and independent, making it a perfect choice for families. For commuters, the location offers quick access to the M3 motorway and is just a short drive from Camberley railway station, providing convenient links to London and surrounding areas.





27 High Street  
Camberley  
Surrey  
GU15 3RB  
01276 66566  
camberley@waterfords.co.uk



All measurements are approximate and for display purposes only

Fairway Heights, Camberley, GU15 1NU